

YOUR UTAH. YOUR FUTURE.



State  
Smart Transportation  
Initiative

# SUCCESS THROUGH PARTNERSHIP: THE SALT LAKE CITY CASE

October 9, 2014

# ENVISION UTAH

- Founded in 1997
- Nonprofit, nonpartisan, voluntary
- Partnership of business, government, and community



# Envision Utah - Executive Committee

- Dan Lofgren, Cowboy Partners (chair)
- Natalie Gochmour, University of Utah (vice chair)
- Alan Matheson, Governor's Office (vice chair)
- Tom Berggren, Jones Waldo (secretary)
- Jeff Hatch, Former Salt Lake County Auditor (treasurer)
- Pamela Atkinson, Community Leader
- Martin Bates, Granite School District
- Bonnie Jean Beesley, Board of Regents
- Lonnie Bullard, Jacobsen Construction
- David Burton, Emeritus LDS Presiding Bishop
- Kathleen Clarke, Utah Public Lands Policy
- Rebecca Chavez-Houck, House of Rep.
- Spencer Eccles, Private Equity
- Jeff Edwards, EDCU
- Larry Ellertson, Utah County Commission
- Andrew Gruber, Wasatch Front Regional Council
- Ty McCutcheon, Rio Tinto
- Brenda Scheer, University of Utah
- Charles Sorenson, Intermountain Health Care
- Wayne Niederhauser, Senate President
- Rich Waije, Rocky Mountain Power
- Scott Anderson, Zions Bank

# The Process Created by Envision Utah

- Is guided by a large, trusted, and diverse group of **Stakeholders**
- Relies on community **Values** to find common ground, communicate choices, and build consensus
- Uses **Scenarios** of the future to provide clear choices, make tradeoffs, set strategies, and refine direction



# Values in Visioning

- Values research uncovers what people prize most in their lives and the means by which they achieve it.
  - Begins by understanding what attributes or characteristics have the greatest impact on quality of life.
  - Identifies the functional and emotional benefits that result when those things are present (or absent) in one's life.
  - Connects those benefits with their personal values.

There is a "strategic hinge" which exists, linking the attributes and benefits of life in Utah to the people that live here



*Reason*  
*Emotion*



Identifying the rational and emotional drivers of this hinge is the purpose of "values" research.

YOUR UTAH. YOUR FUTURE.

# Bringing Utahns Together



## Workshops: You Tell Us



Participants imagined the future  
for their  
children and grandchildren



...and answered the question:  
*How shall we accommodate  
anticipated growth?*

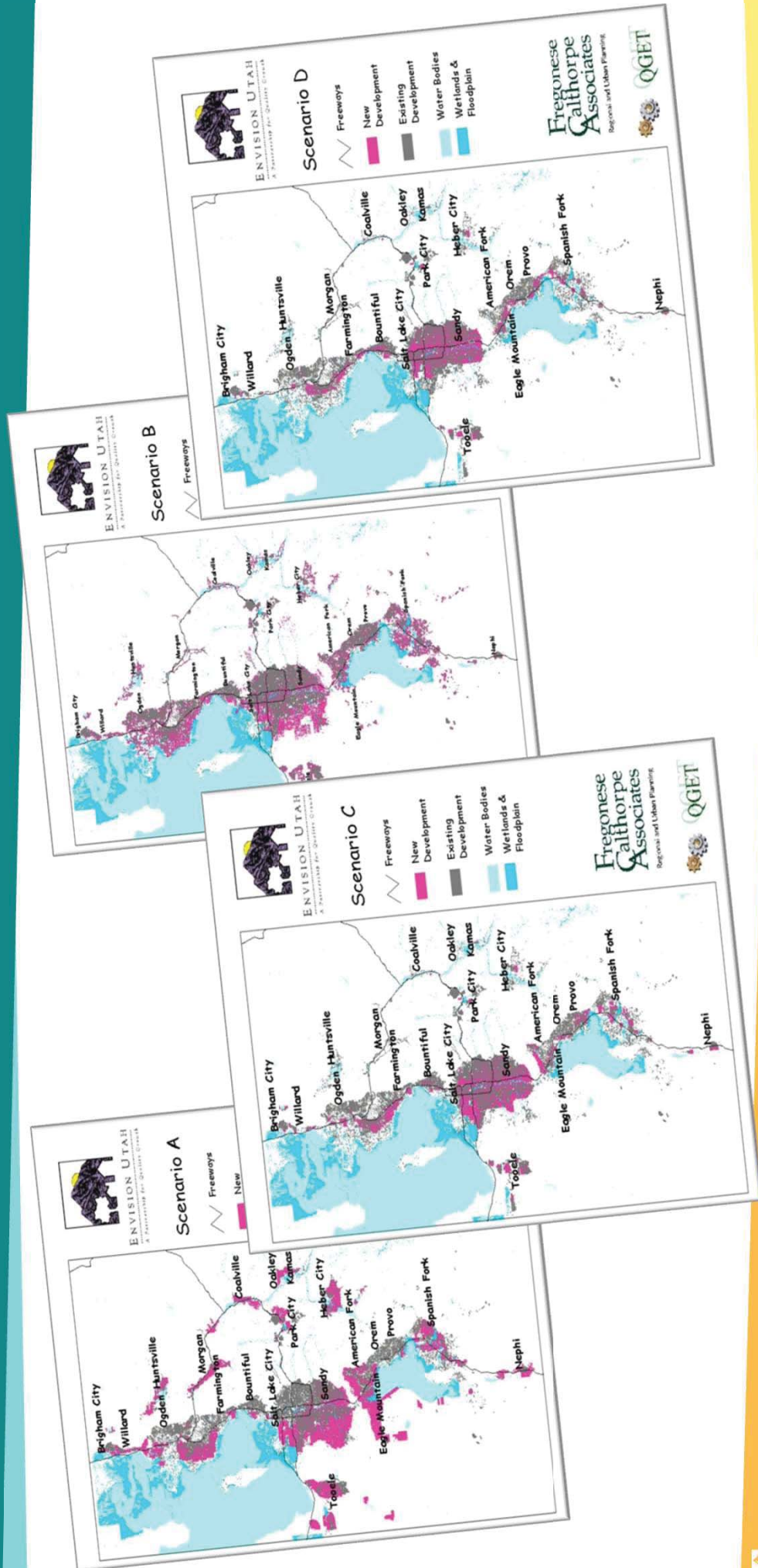
## Public Awareness Efforts

“(Envision Utah’s) intent – empowering Utahns to control and maintain their envied quality of life – is above approach.”  
(Deseret Morning News editorial, 15 Dec. 98)

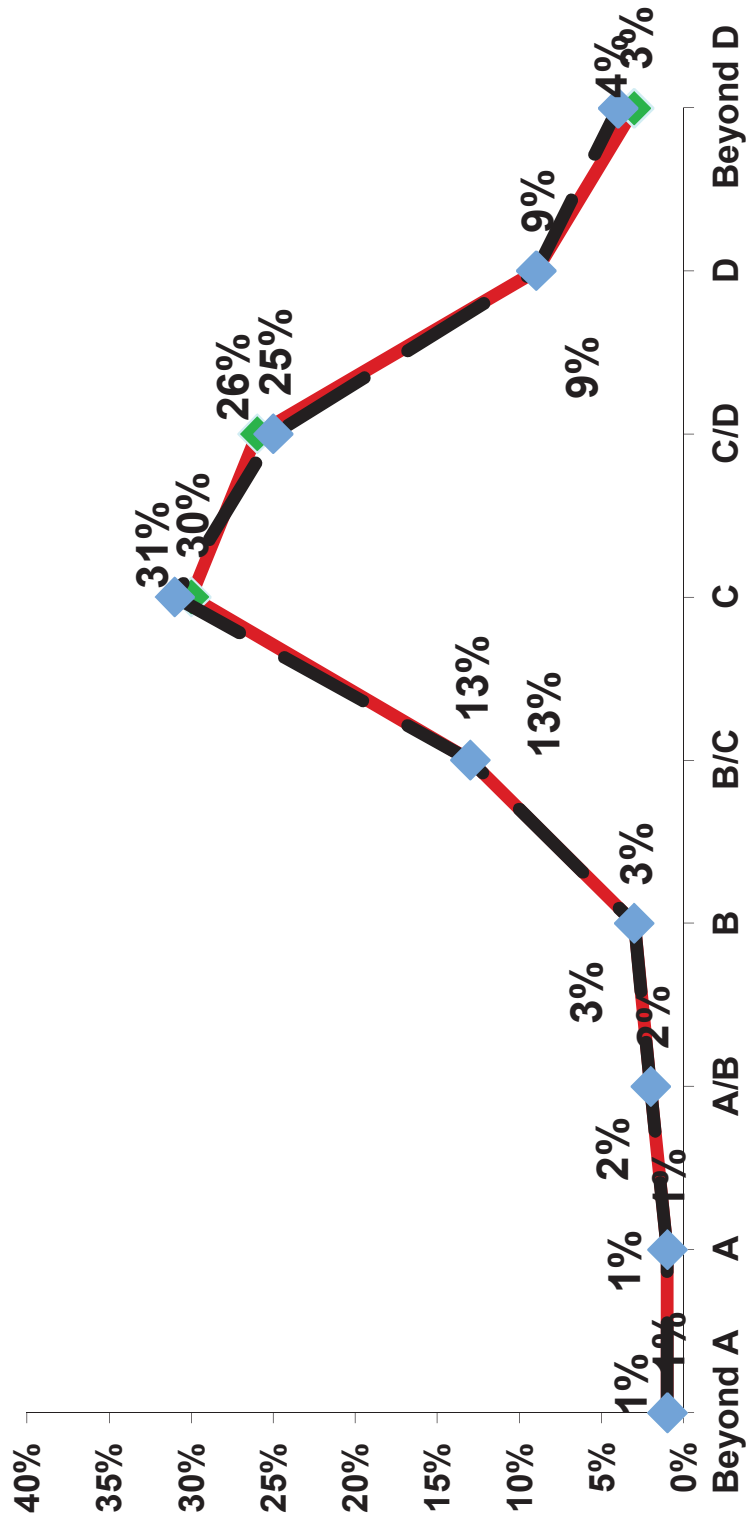




# YOUR UTAH. YOUR FUTURE.



# Choosing a Scenario



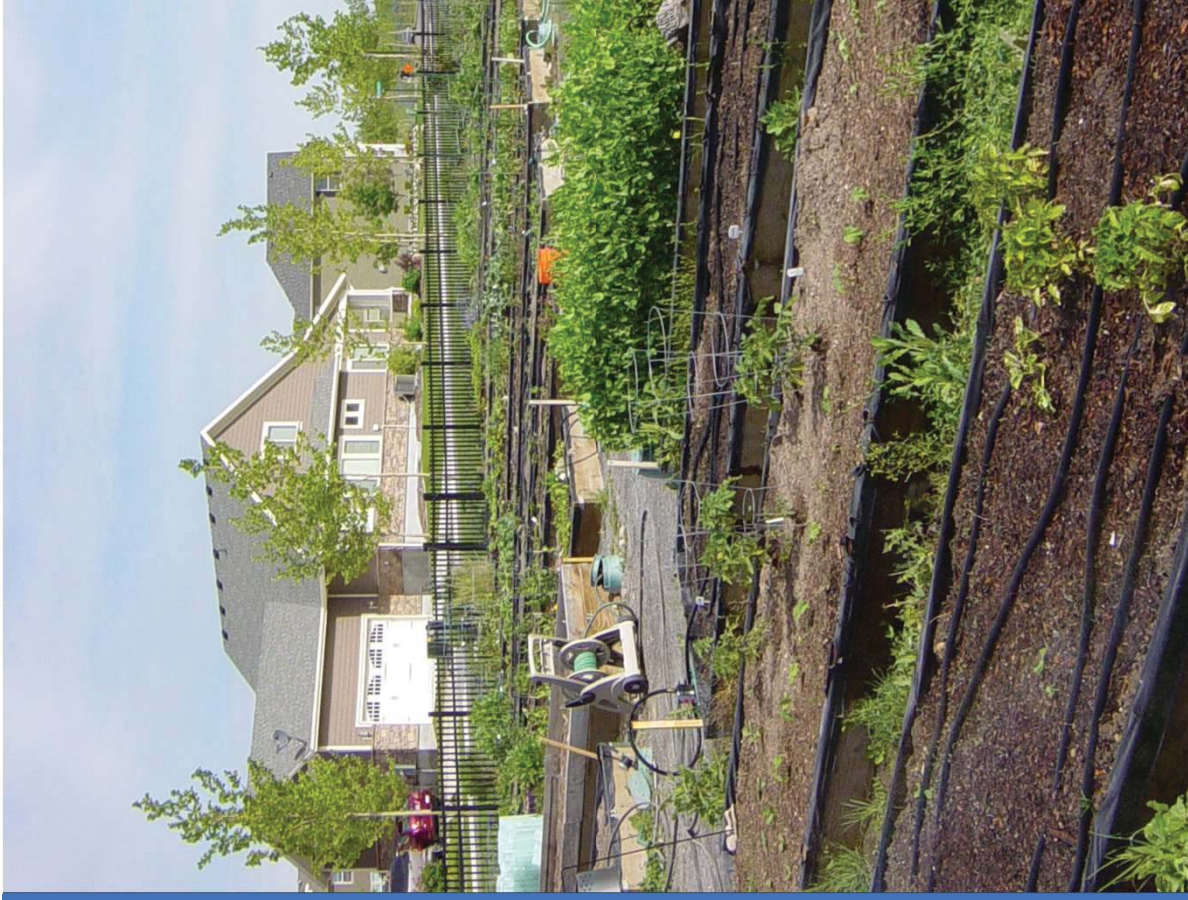
1998

2020



# Measures

- 1998 Conditions
- 2020 Trend
- 2020 Strategy



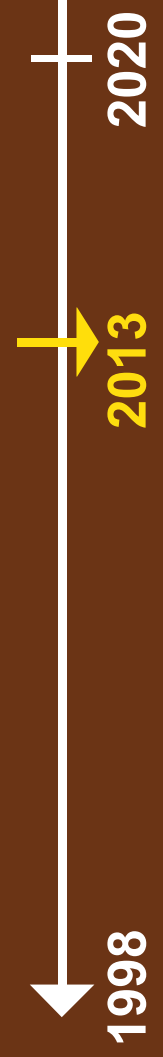


# YOUR UTAH. YOUR FUTURE.

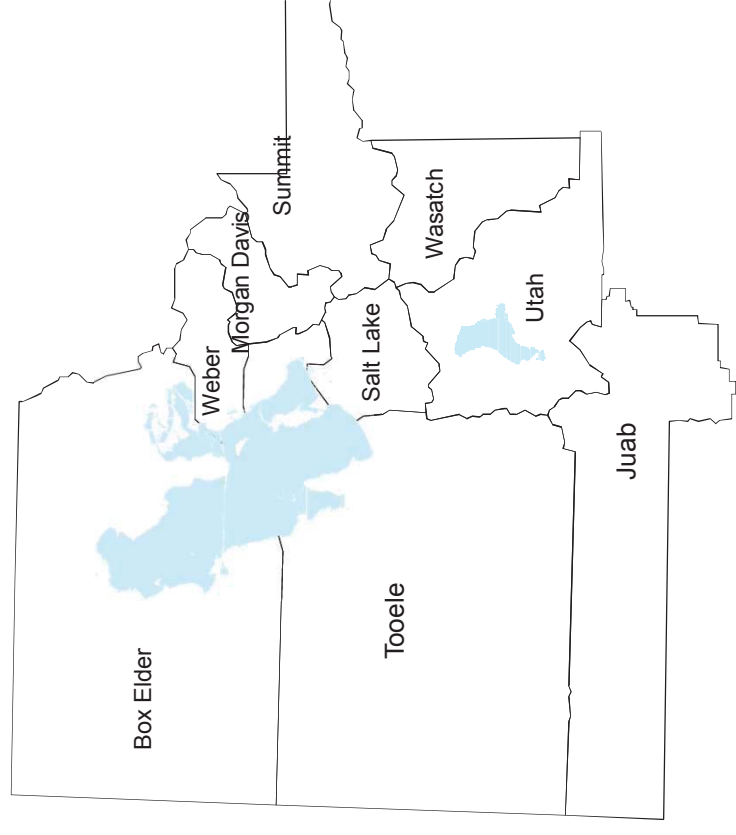




# 10 County Population

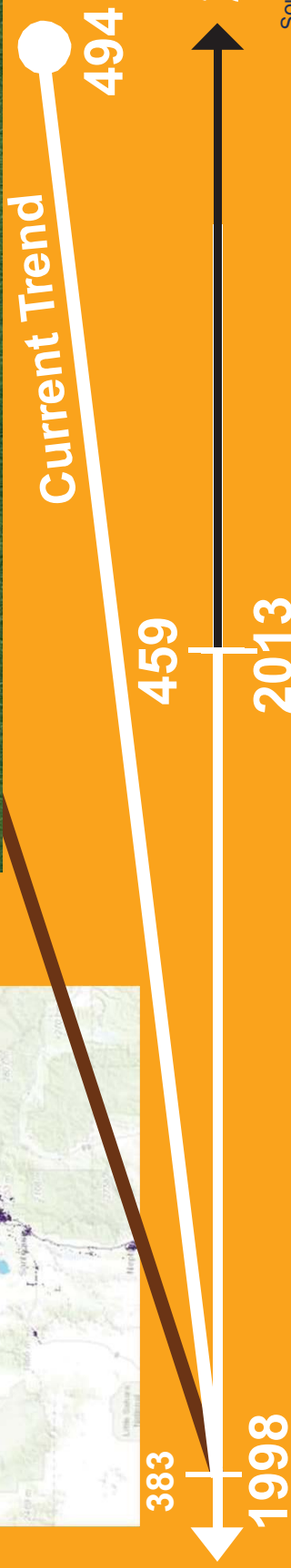
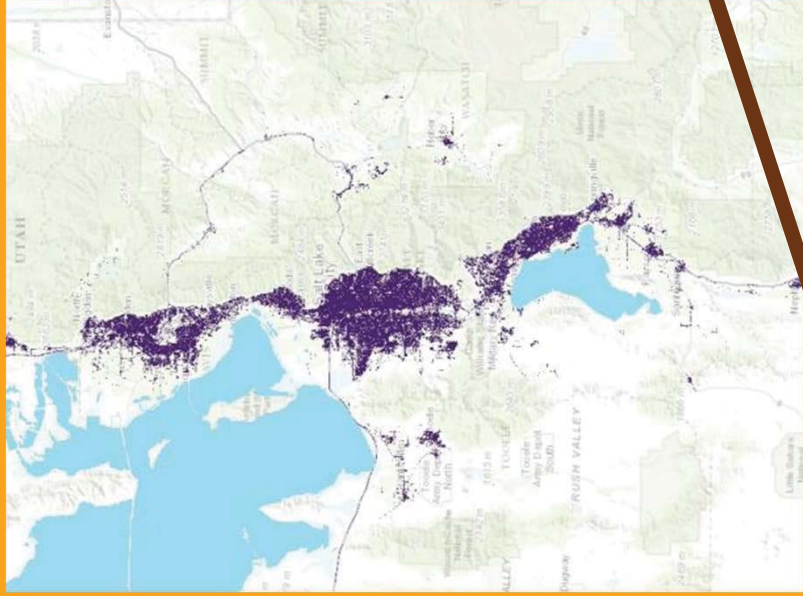
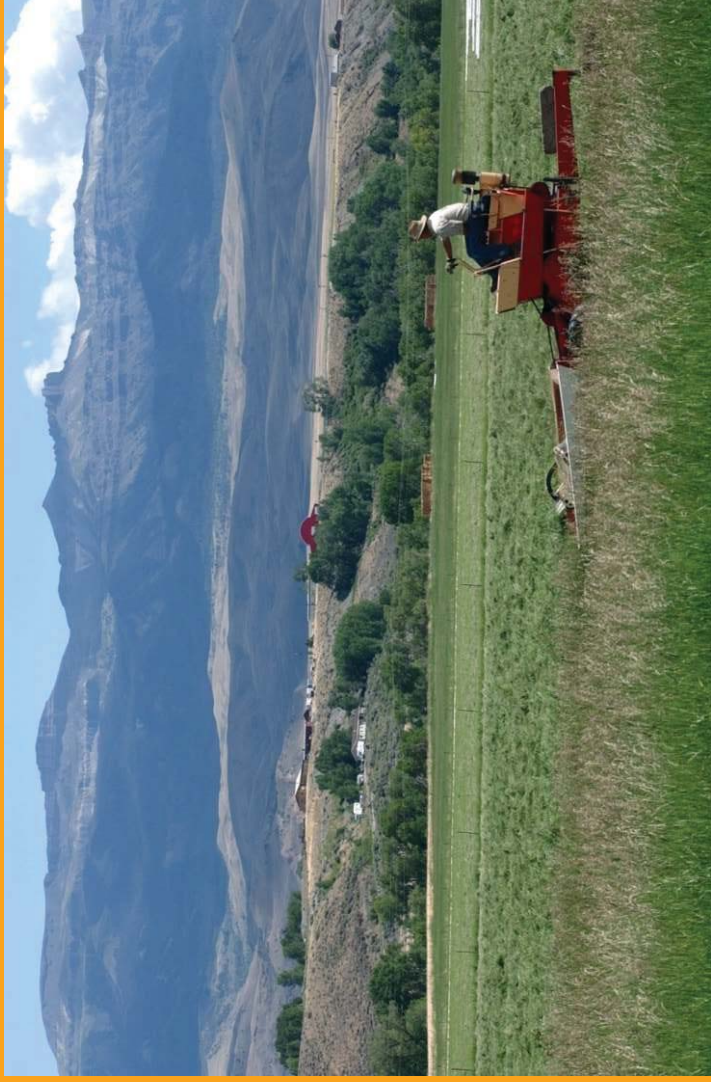


# Original Analysis



Source: Envision Utah Quality Growth Strategy and Technical Review, Census 2010 SF1-100%

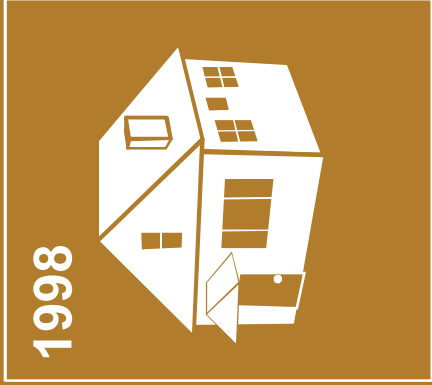
# Square Miles of Developed Land



Source: National Land Cover Data

# Average Single Family Lot Size

---

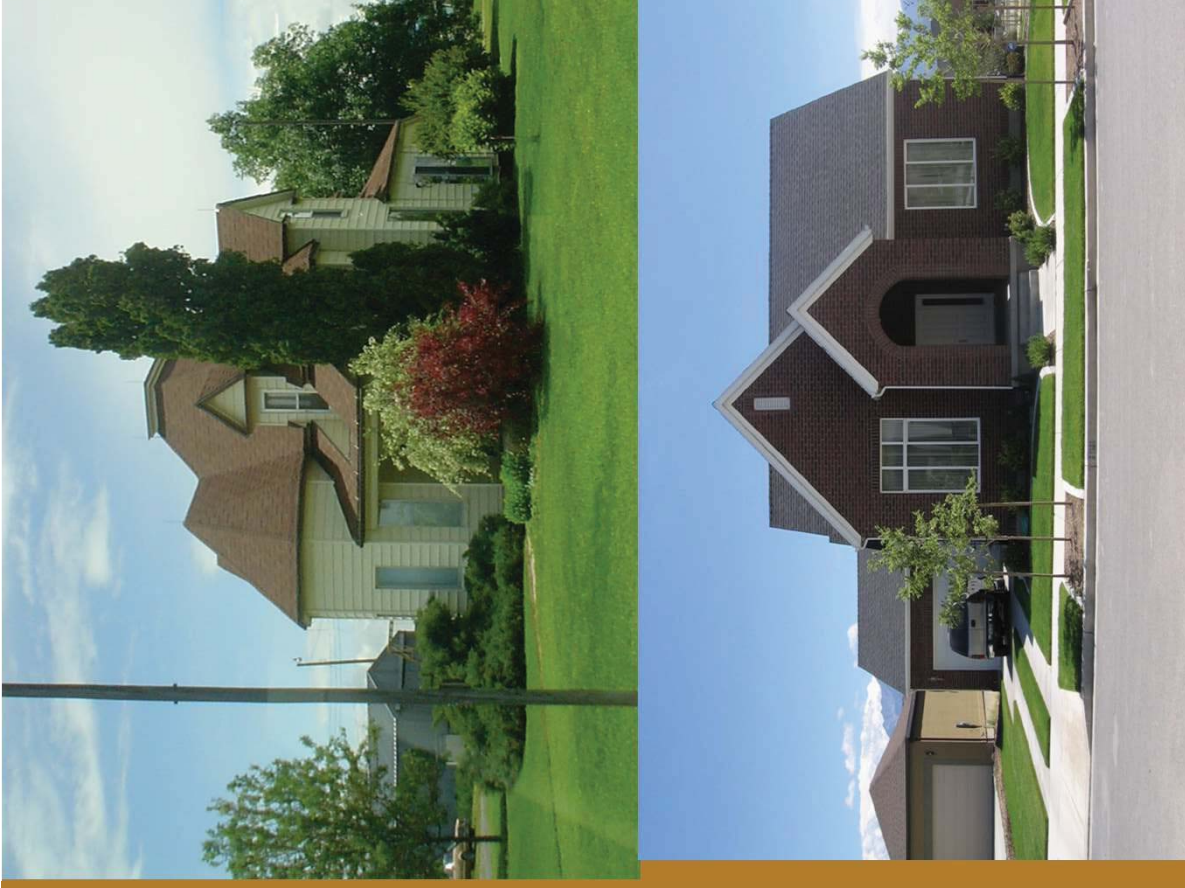


**.32 acres**

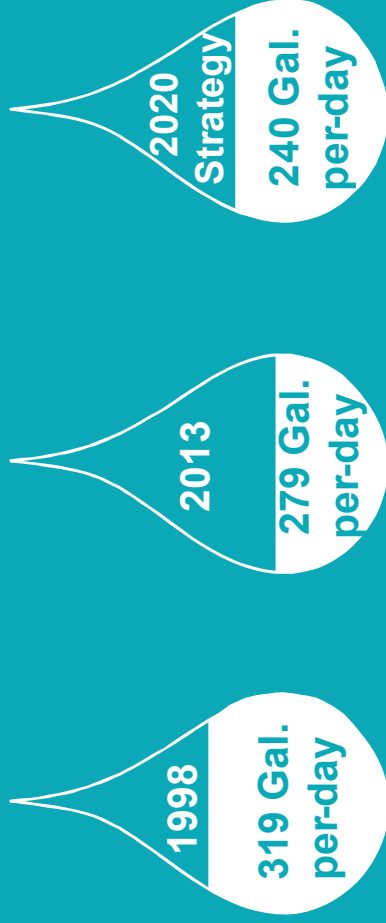


**.25 acres**

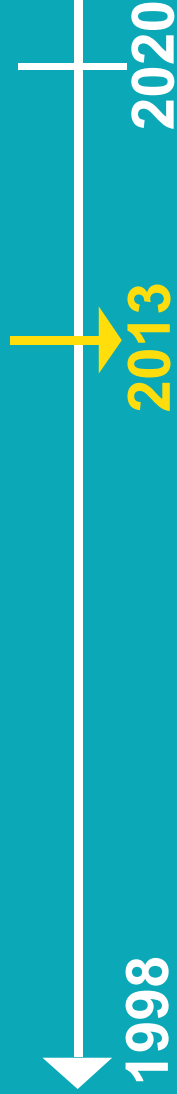
**22%  
Decrease**



# Per Capita Water Consumption



25% Decrease



YOUR UTAH. YOUR FUTURE.



Source: Envision Utah Quality Growth Strategy and Technical Review, Census 2010 SF1 100%, Utah DNR



# Transportation

---

Vehicle miles per person per day

1998  25.1

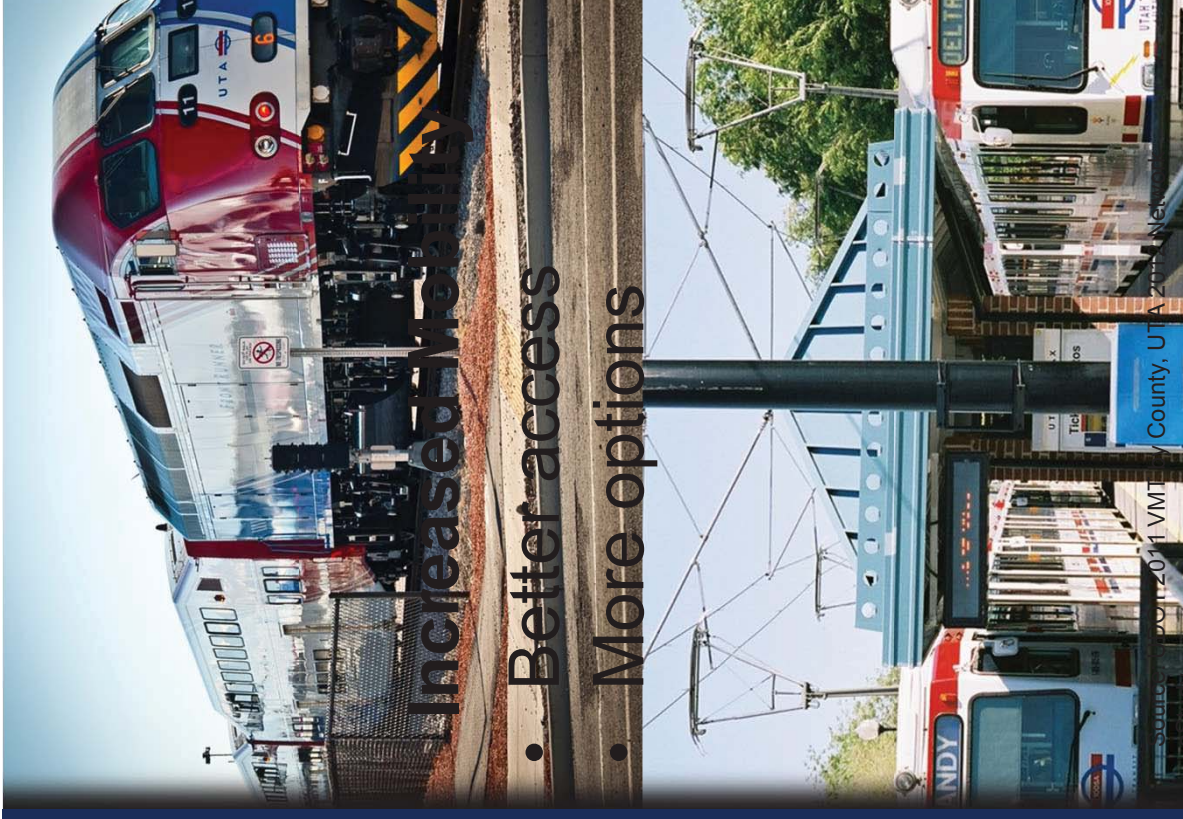
2013  24.2

2020  29.3

Trend

2013 

150,000 Transit Boardings  
replacing 110,000 daily auto trips



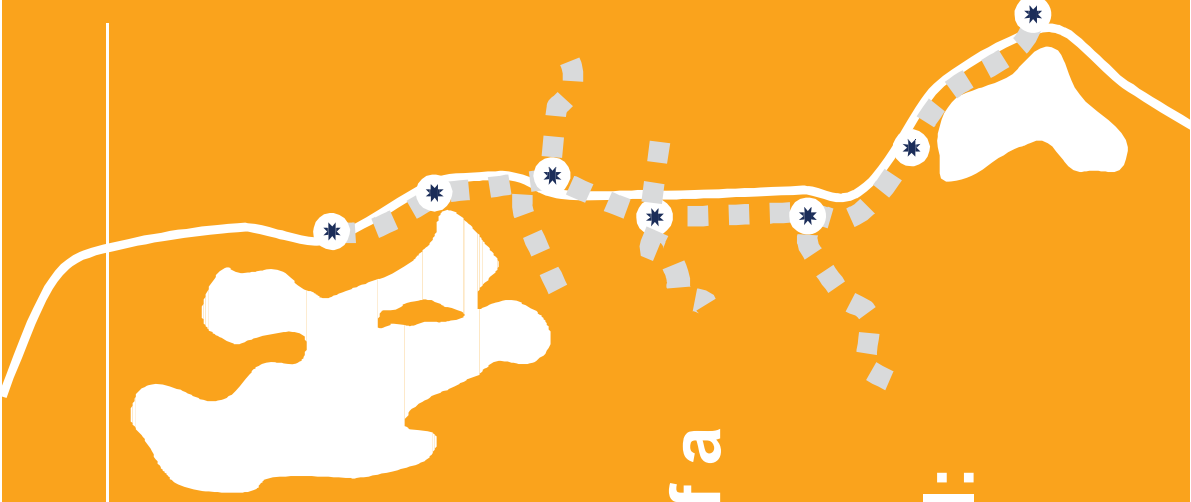
**140 miles of  
Rail added**

**70 stations**

**195,000 people  
within 1/2 mile of a  
rail station**

**2020 strategy goal:**

**700,000+**

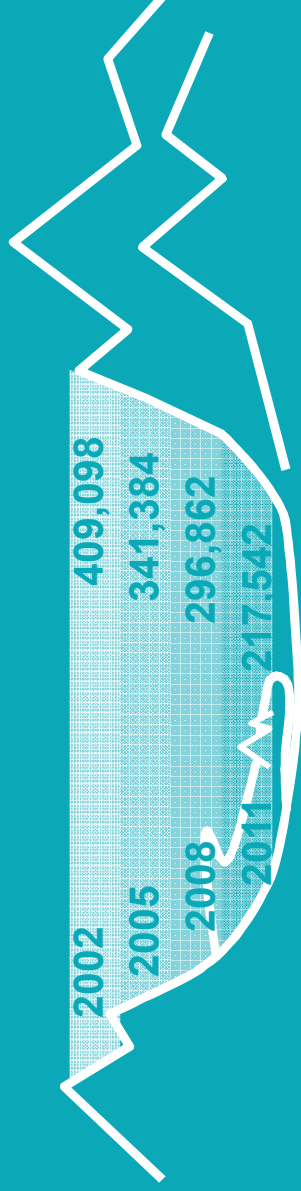


**YOUR UTAH. YOUR FUTURE.**





# Air Quality



**Division of Air Quality  
Salt Lake County  
total inventoried pollutants annual  
emissions in tons per year**

Source: Utah Division of Air Quality

# **Quality Requires Action**

- Continued effort
- Additional education
- Research
- Cooperation

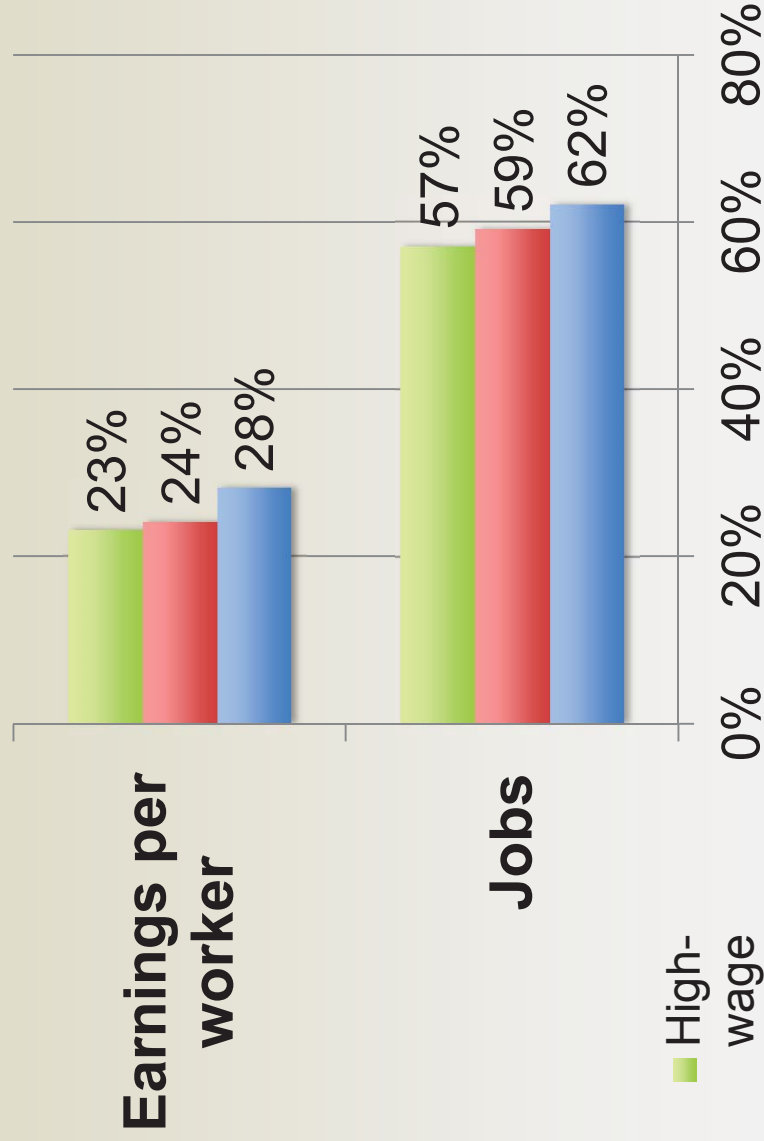
# Infrastructure Savings

- Capital costs
- Maintenance costs



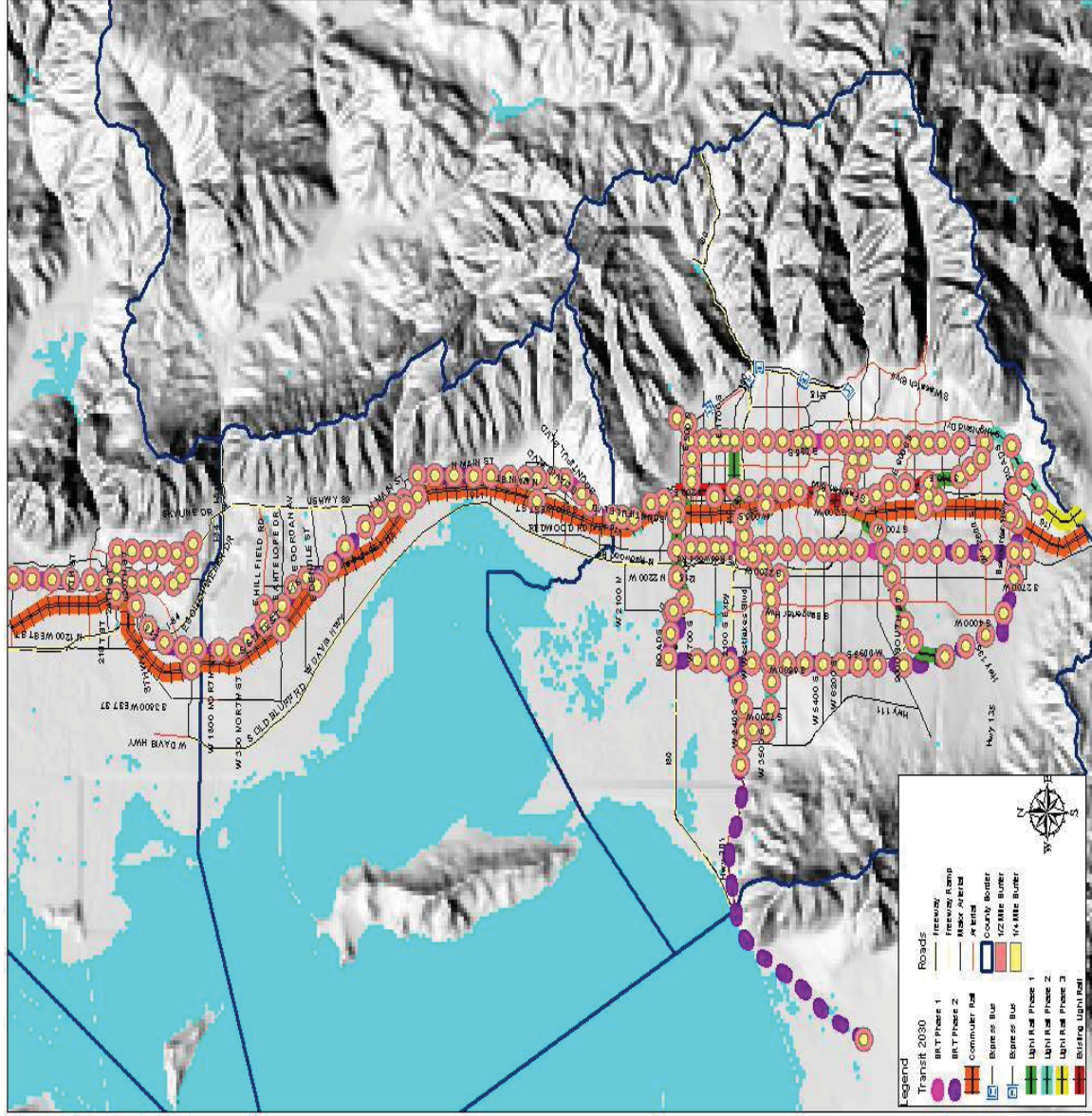


Growth in Jobs and Earnings by Wage Level  
Salt Lake City Metro, 1990-2010



# “Remarkable record of more inclusive growth”

Dr. Manuel Pastor,  
University of Southern California



## Estimated Statistics between Salt Lake, Davis and Weber Counties:

acres within 1/2 mile of transit nodes:

**80,000**

Housing units within 1/2 mile transit nodes @ 8 DU/acre on half of the acres:

**320,000 units**

Population estimate @ 3 persons per household:

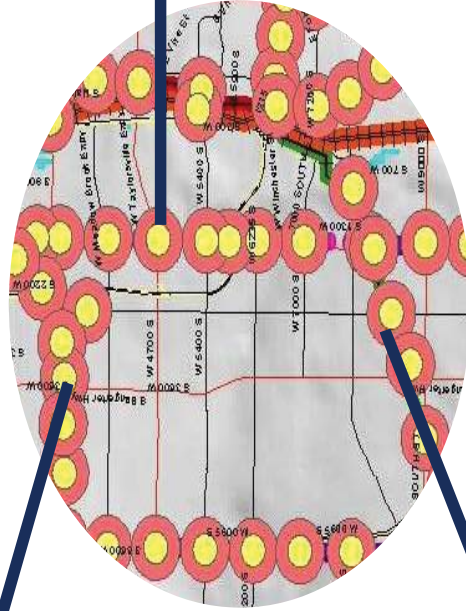
**960,000 people**



**Employment  
Centers**



**Walkable  
Mixed-Use  
Villages**



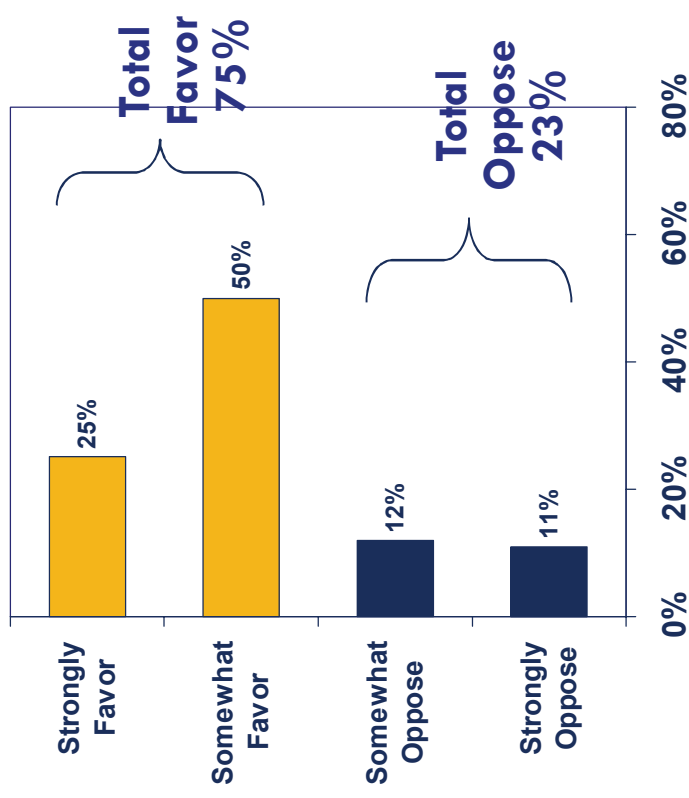
**Housing  
opportunities**



# PUBLIC OPINION ON HOUSING

*Q7: Do you favor or oppose building a variety of housing options such as town homes, condos and apartments in your community to accommodate the increased number of young and older Utahns?*

## Housing Age Accommodations



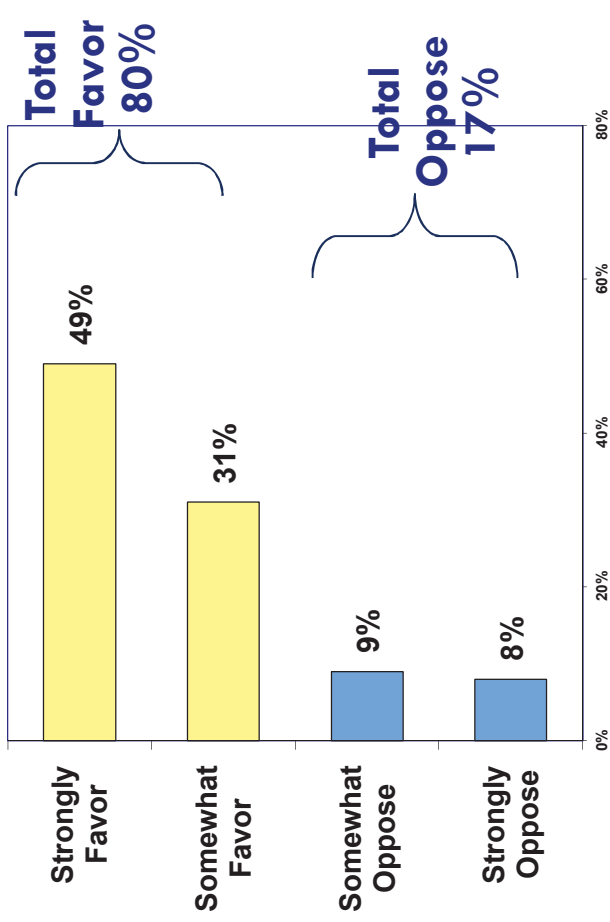
SAMPLE SIZE AND AUDIENCE: 400 Utah Adults 18+ Across 10 Counties  
MARGIN OF ERROR: ± 4.9% at the 95% Confidence Level

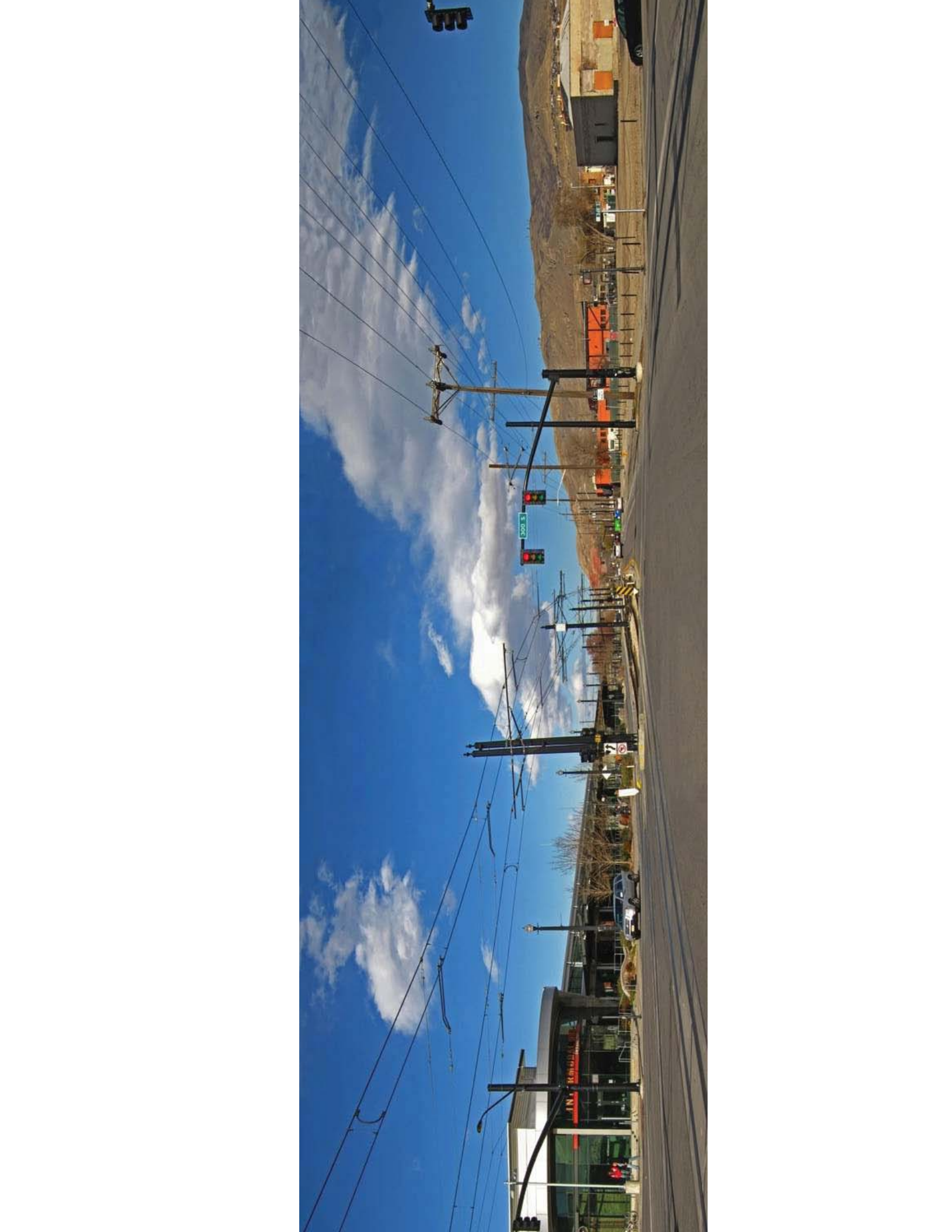


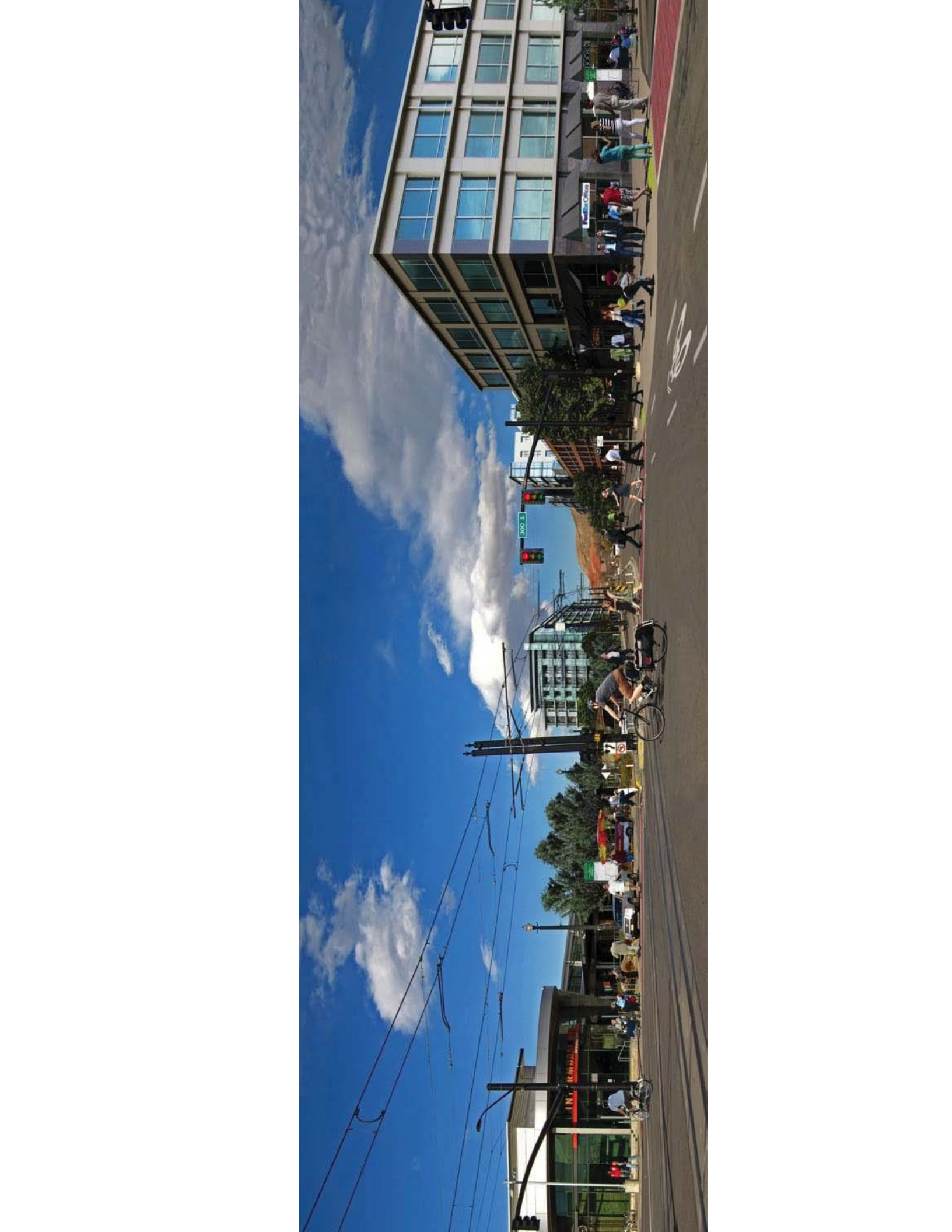
# PUBLIC OPINION ON HOUSING

*Q8: Do you favor or oppose that each community, including yours, should have housing options that accommodate income levels for police officers, school teachers, nurses, and fire-fighters?*

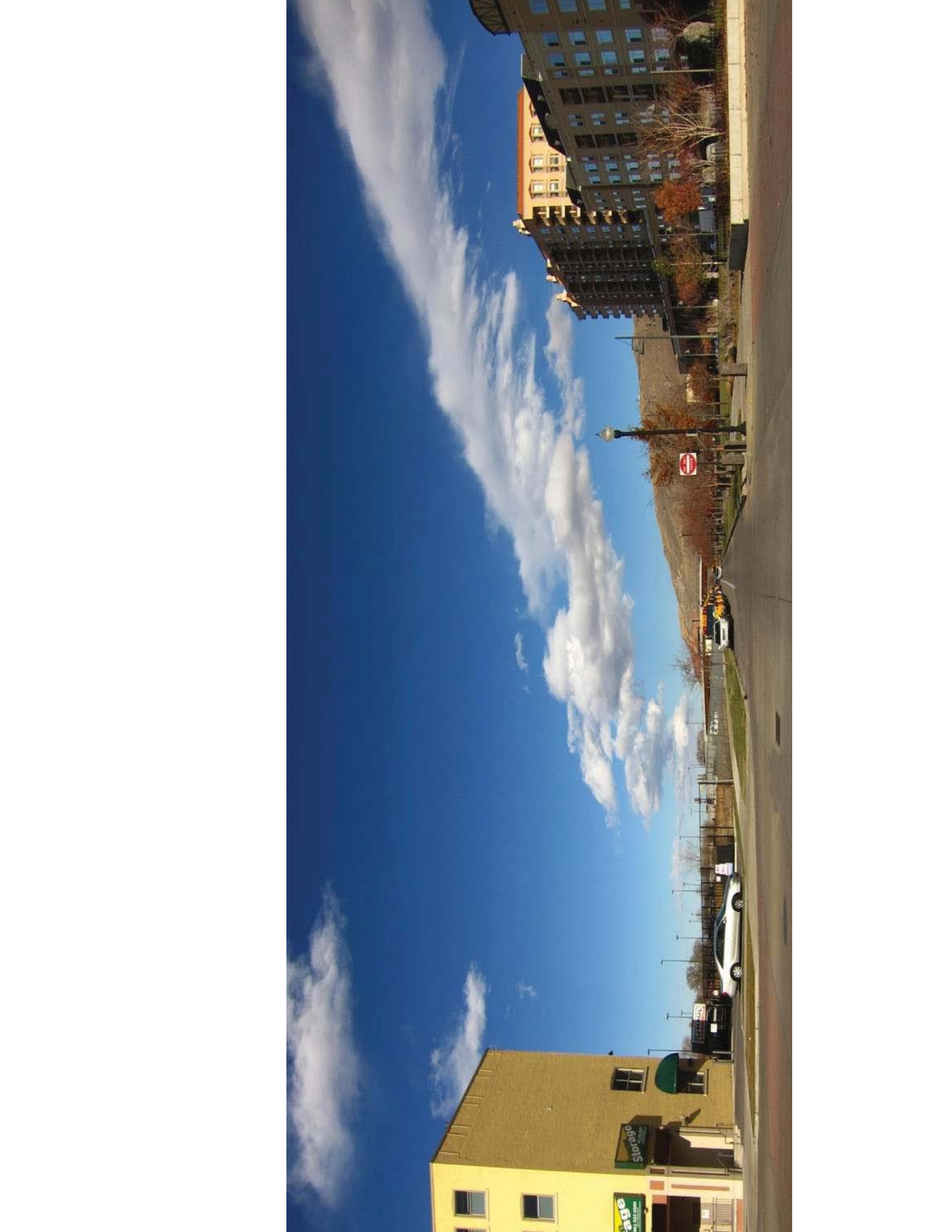
## Housing Income Accommodations















# Meadowbrook Station Phase 1 – 3900 S and West Temple





# Meadowbrook Station Phase 1 – 3900 S and West Temple



# Meadowbrook Station Phase 1 – 3900 S and West Temple





# Meadowbrook Station Phase 2 – West Temple and Gordon Avenue



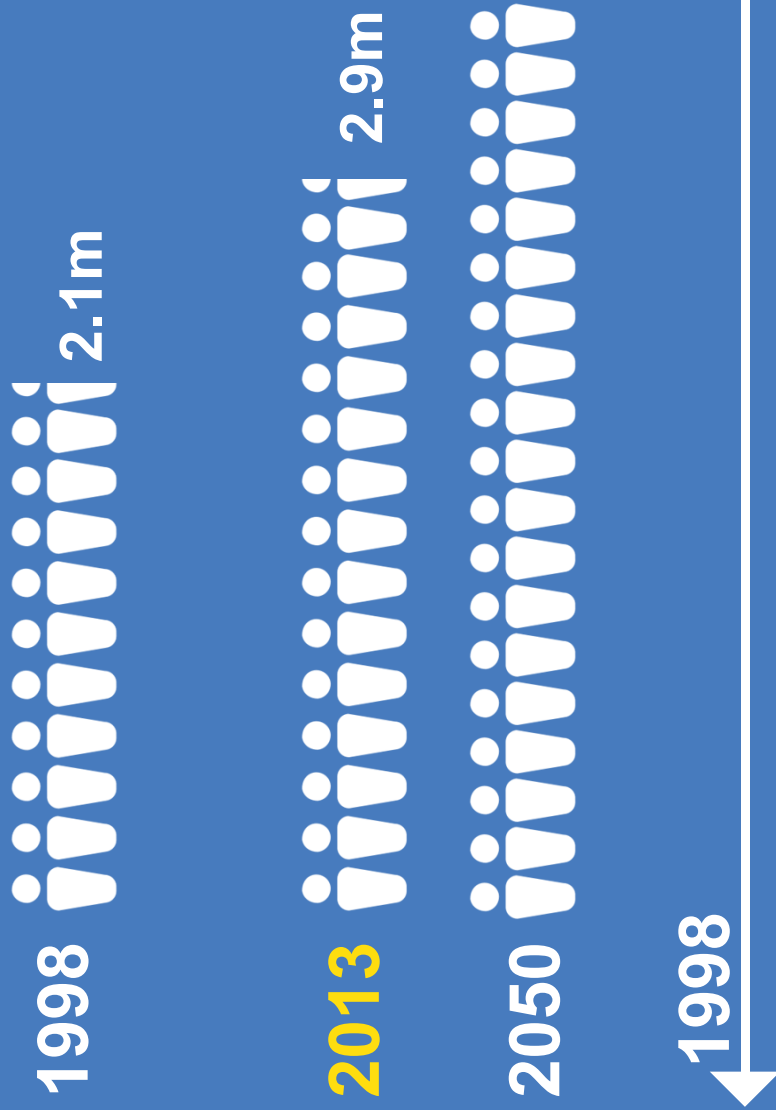
# Meadowbrook Station Phase 2 – West Temple and Gordon Avenue





# As Utah adds 2.5 million by 2050...

YOUR UTAH. YOUR FUTURE.



YOUR UTAH. YOUR FUTURE.

# YOUR UTAH. YOUR FUTURE.

Utah's population will nearly double in size.  
Utah's land will not.



TODAY THERE ARE

**2,900,000**

PEOPLE IN UTAH



BY 2050 THERE WILL BE

**5,400,000**

PEOPLE IN UTAH





“In Utah, we don’t believe in sitting back and seeing where growth will take us. We seek to be visionary and to actively secure our future. Together, we will develop a voluntary, locally-implemented, market-driven vision to help keep Utah beautiful, prosperous, healthy and neighborly for current residents and future generations.”



**Governor Gary R. Herbert,**  
honorary co-chair of Envision Utah  
October 29, 2013

“Thirty years ago, if we had some leader stand up and say, ‘I foresee the growth. Let’s put the roads over here, let’s save this land for parks, let’s put things in place,’ today, we would probably erect a statue of that guy. What a leader.”



**Gary R. Herbert**  
Utah County Commissioner  
1990-1994



# Project Timeline

## Exploring Choices

- Values study
- Action team meetings
- Workshops
- Scenario modeling
- Public input

## Choosing

- Online survey
- Media and outreach campaign
- Statistical survey

## Vision Establishment

- Analyzing the public's choices
- Vision documentation
- Vision release

## Implementation

- Strategies implemented voluntarily

2014

Early 2015

2015

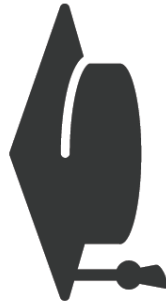
2016



# YOUR UTAH. YOUR FUTURE.



Housing &  
Cost of  
Living



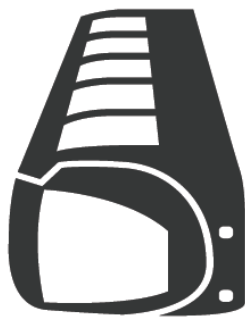
Education



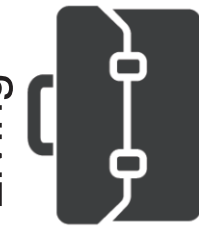
Agriculture



Air Quality



Transportation  
& Communities



Economic  
Development



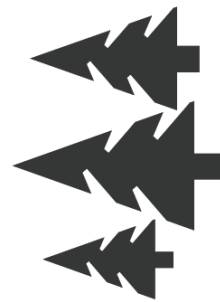
Disaster  
Resilience



Recreation



Water



Natural  
Lands



Energy

## In the future . . .

Which of the following issues will impact your children's and grandchildren's lives in Utah through 2050?



YOUR UTAH. YOUR FUTURE.



Thank you